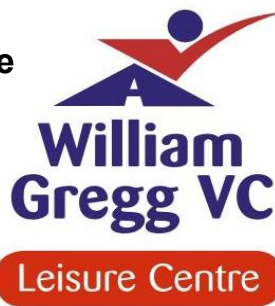
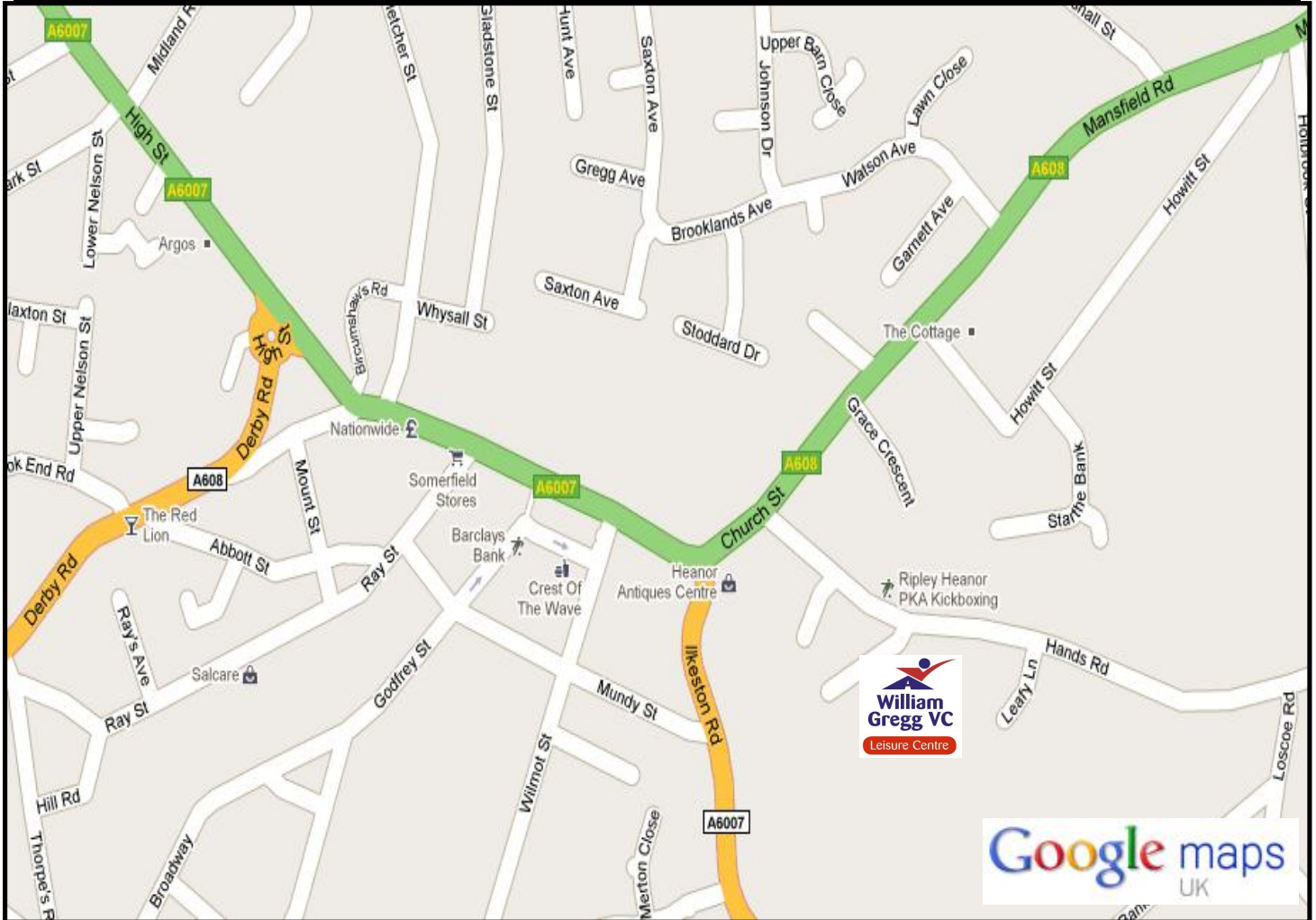


Dc Leisure Management Ltd
William Gregg VC Leisure Centre
 Hands Road
 Heanor
 Derbyshire
 DE75 7HA
 Telephone: (01773) 537940
 Fax: (01773) 537955
 Email: enquiries@williamgreggvcleisurecentre.co.uk Web: www.williamgreggvcleisurecentre.co.uk



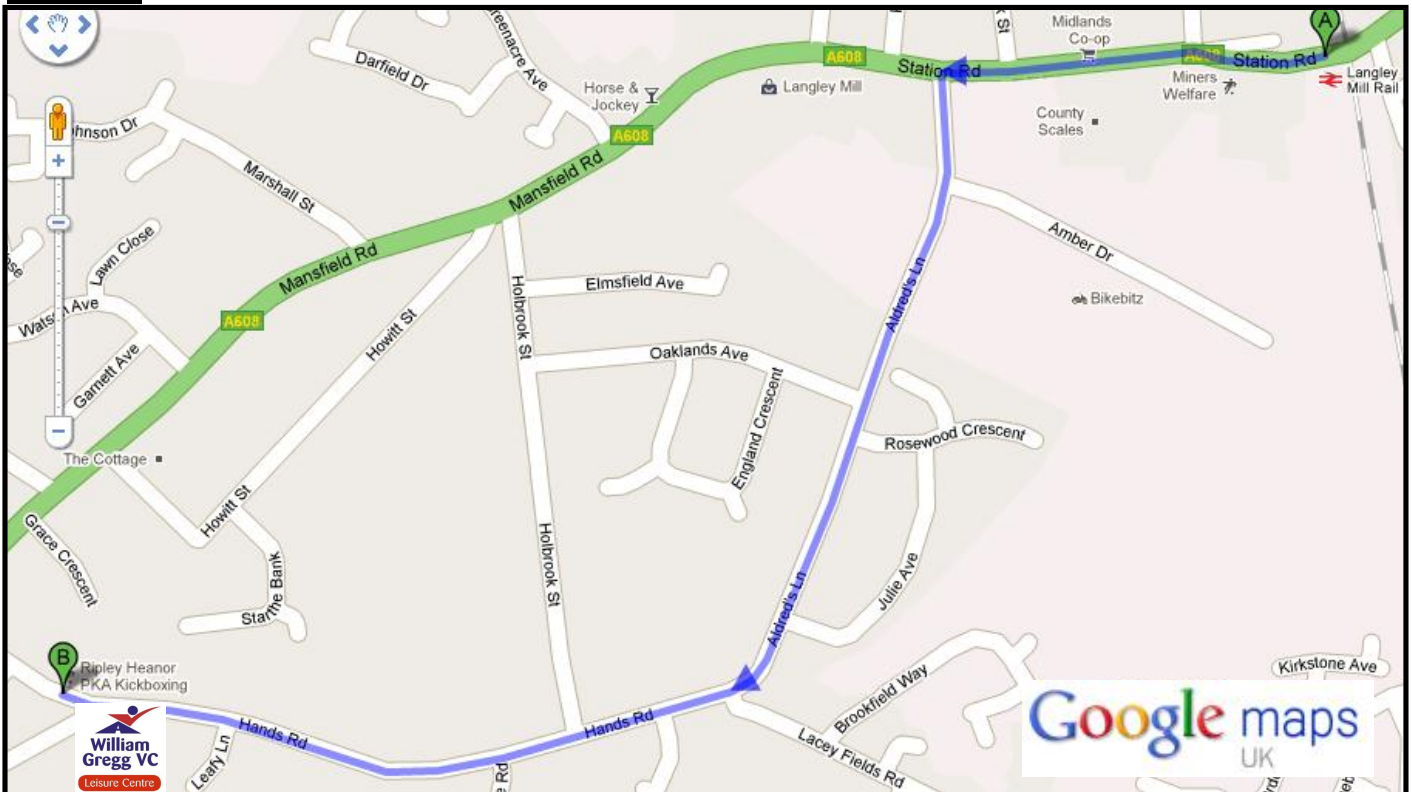
LOCATION MAP



Building Exterior:



By rail:



Get the train to Langley Mill. For the most up-to date train times & fare information, we recommend you visit www.nationalrail.co.uk.

From the station, turn left (if arriving from Nottingham) right (if arriving from Alfreton) onto Station Road and walk straight for 0.4 miles (you will pass the Inn the Middle public house on your right after 0.08 miles). Turn left onto Aldred's Lane; continue straight for 0.4 miles, you will find us on your left hand side.

By bus:

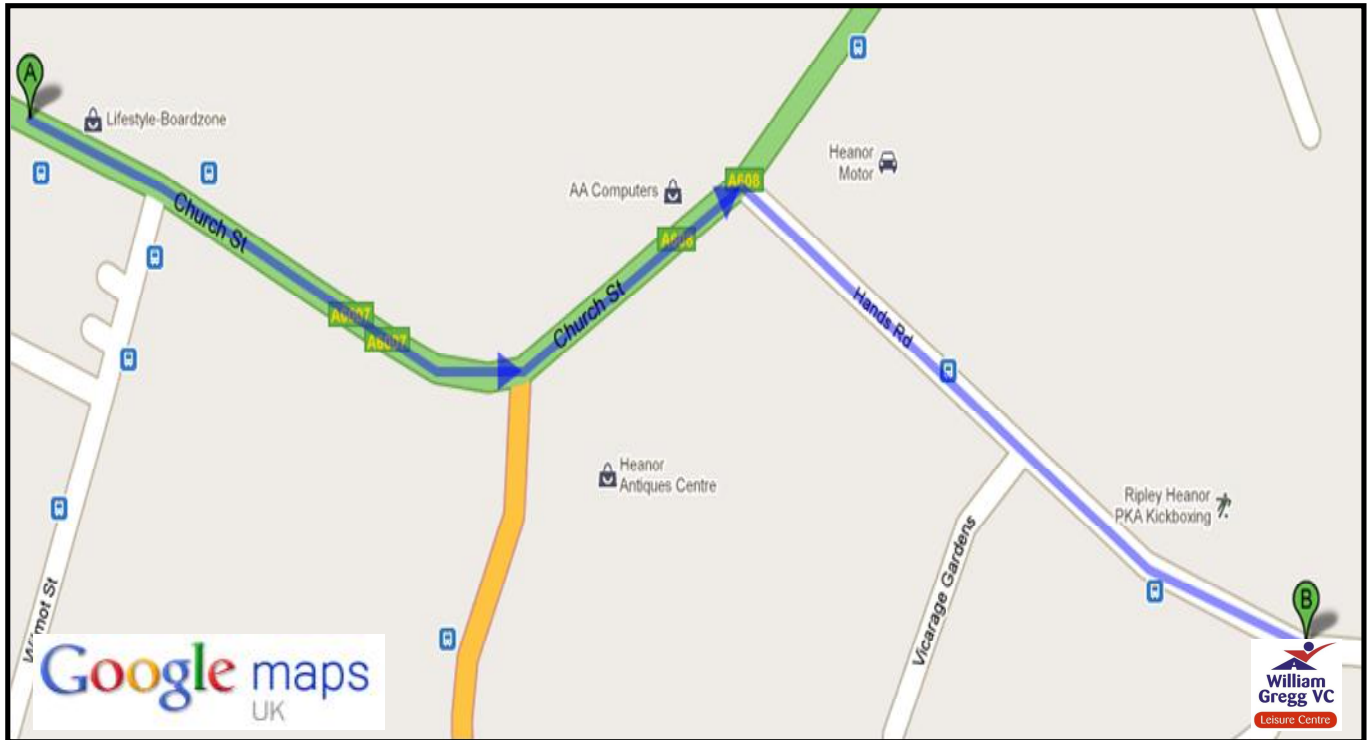
For local bus information, please visit www.trentbarton.co.uk.

The following services pass through Heanor:

- Amberline
- H1
- 1A
- 23
- Rainbow 1

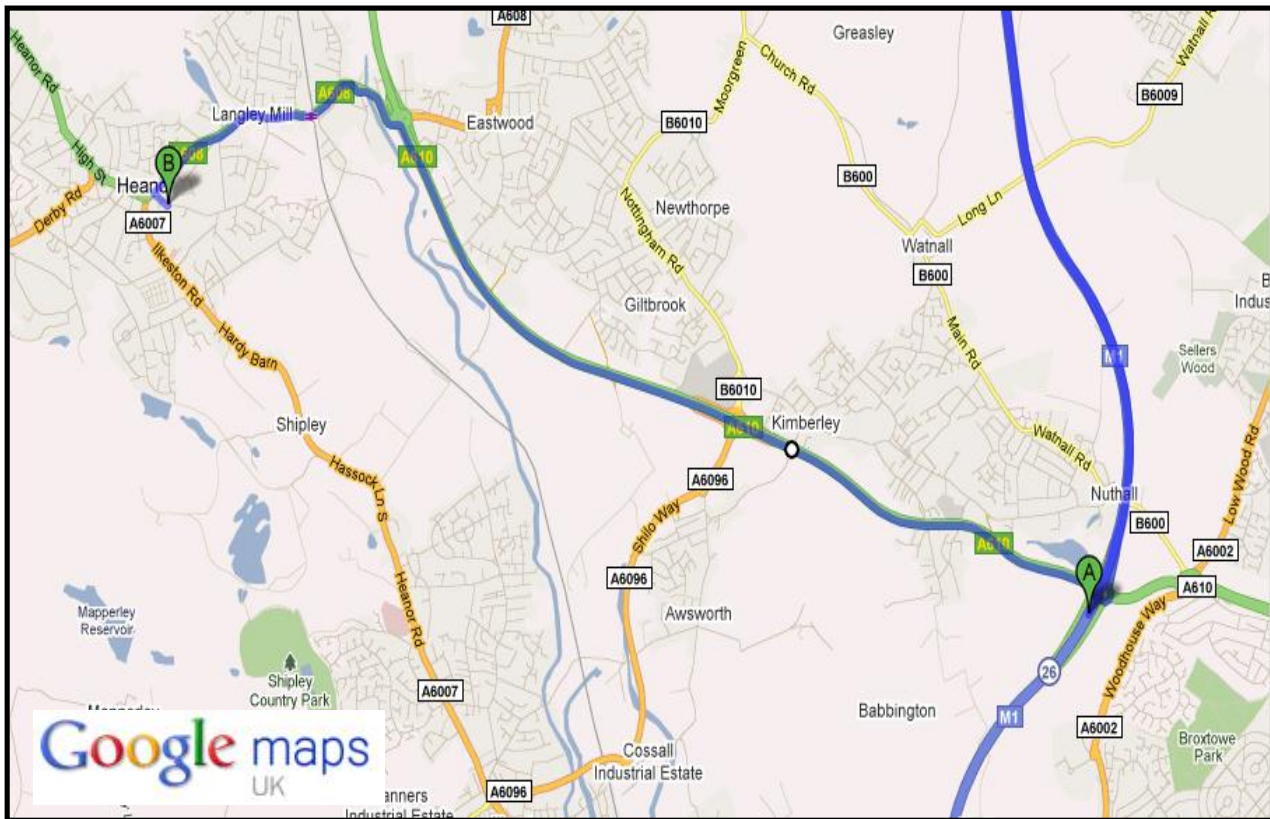
Please ask to stop at Heanor Market Place; we are a short 5 mins, 0.4 mile walk away (please refer to next page).

By foot from Heanor Market Place:



- Walk east towards Wilmot Street (Lighthouse charity shop on your left)
- Cross Wilmot Street & continue forwards towards Heanor Antiques Centre (South East Derbyshire College on your right)
- Cross Ilkeston Road at the pedestrian crossing & continue down Church Street (The Crown Inn on your right)
- Turn right onto Hands Road (first road on right)
- Continue down the hill for 0.1 miles, you will find us on the right hand side.

From M1 Northbound:



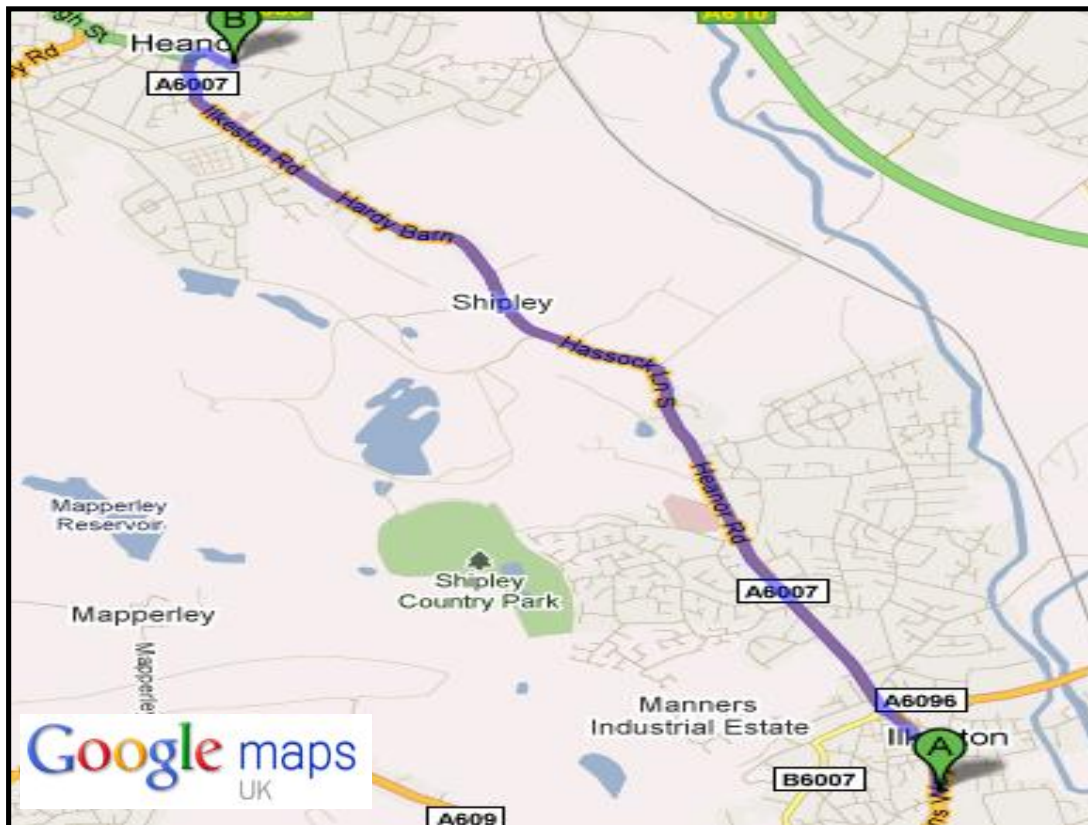
- Leave M1 at Junction 26, then at roundabout take the first exit onto A610. Signposted:
Ripley, Matlock
- After 4.44 miles, branch left. At roundabout take first exit onto A608.
Signposted:
Langley Mill, Heanor
- Continue straight at the traffic lights (You will pass KFC on your left hand side, petrol station on the right)
- Take the first exit at the ASDA roundabout.
- Continue straight on A608 for 0.46 miles. **CAUTION! 30mph Speed Cameras along this stretch of road.**
- Turn left onto Hands Road
- You will see the Leisure Centre on the right hand side.
- **Please note a Pay & Display system is in operation 7 days a week on our car parks. Please ensure that you display the top half of your car parking ticket in your windscreen as we don't want you to get a parking fine! Simply detach the bottom half of your parking voucher and hand it in at reception on your arrival to receive a full parking refund.**

From M1 Southbound:



- Leave M1 at Junction 26, then at roundabout take the third exit onto A610. Signposted:
Ripley, Matlock
- After 4.44 miles, branch left. At roundabout take first exit onto A608.
Signposted:
Langley Mill, Heanor
- Continue straight at the traffic lights (You will pass KFC on your left hand side, petrol station on the right)
- Take the first exit at the ASDA roundabout.
- Continue straight on A608 for 0.46 miles. **CAUTION! 30mph Speed Cameras along this stretch of road.**
- Turn left onto Hands Road
- You will see the Leisure Centre on the right hand side.
- **Please note a Pay & Display system is in operation 7 days a week on our car parks. Please ensure that you display the top half of your car parking ticket in your windscreen as we don't want you to get a parking fine! Simply detach the bottom half of your parking voucher and hand it in at reception on your arrival to receive a full parking refund.**

From Ilkeston (Tesco Roundabout, Chalons Way):



- Take the A6007 onto Heanor Road. Signposted: Heanor
- Continue straight on for 3.24miles. **CAUTION! 30mph & 40mph Speed Cameras along this stretch of road.**
- Turn right at the traffic lights (Heanor Antiques Centre on your right).
- Signposted: Motorway M1, Mansfield
- Take the next right (0.05 miles) onto Hands Road
- You will see the Leisure Centre on the right hand side.
- **Please note a Pay & Display system is in operation 7 days a week on our car parks. Please ensure that you display the top half of your car parking ticket in your windscreen as we don't want you to get a parking fine! Simply detach the bottom half of your parking voucher and hand it in at reception on your arrival to receive a full parking refund.**

From Derby (Pentagon Island)



- Take the exit signposted **Chesterfield A61** (Pentagon Vauxhall on left, Virgin Active on right)
- After 0.89 miles, take the 1st exit at the roundabout onto the A608.
- Signposted: **Heanor, Ilkeston**
- Continue straight for 7.82 miles. **CAUTION! Speed Cameras along this stretch of road.**
- At the roundabout (Tesco on left), take the 3rd exit. Signposted **A6007**
- Continue up the hill through Heanor Town Centre.
- Immediately after the Church, continue straight on at the traffic lights.
- Take the next right (0.05 miles) onto Hands Road
- **Please note a Pay & Display system is in operation 7 days a week on our car parks. Please ensure that you display the top half of your car parking ticket in your windscreen as we don't want you to get a parking fine! Simply detach the bottom half of your parking voucher and hand it in at reception on your arrival to receive a full parking refund.**

From Nottingham (Queens Medical Centre)



- Take the A6514 signposted: **Ring Road, The North M1, Mansfield**
- Continue 0.81 miles, take 3rd exit at roundabout onto A6514.
- Signposted **Ring Road, The North, Mansfield A60**
- Continue 0.95 miles, at roundabout take 2nd exit onto the A6514.
- Signposted **Ring Road, Mansfield A60**
- Continue 0.41 miles, at traffic lights turn onto the A610.
Signposted: **Motorway M1, Matlock**
- Continue 0.77 miles. **CAUTION! Speed Cameras along this stretch of road.** At traffic lights, continue forward onto the A610.
Signposted: **M1, Matlock**
- Continue 0.46 miles, at roundabout take the 2nd exit onto A610.
Signposted: **Matlock**
- Continue 0.87 miles, at roundabout take the 3rd exit onto A610.
Signposted: **M1, Matlock**
- At roundabout take the 2nd exit onto the A610.
- Signposted: **Ripley, Matlock**
- After 4.44 miles, branch left. At roundabout take first exit onto A608.
Signposted: **Langley Mill, Heanor**
- Continue straight at the traffic lights (You will pass KFC on your left hand side, petrol station on the right)
- Take the first exit at the ASDA roundabout.
- Continue straight on A608 for 0.46 miles. **CAUTION! 30mph Speed Cameras along this stretch of road.**
- Turn left onto Hands Road
- You will see the Leisure Centre on the right hand side.
- **Please note a Pay & Display system is in operation 7 days a week on our car parks. Please ensure that you display the top half of your car parking ticket in your windscreen as we don't want you to get a parking fine! Simply detach the bottom half of your parking voucher and hand it in at reception on your arrival to receive a full parking refund.**

